



OPEN FOR
BUSINESS
OPEN FOR
INNOVATION

Presentation to UF Faculty Senate Steering Committee

September 5, 2013

Thomas Hawkins

- City Commissioner, City of Gainesville, Florida
- Attorney, W. Thomas Hawkins, PA
- hawkinswt@cityofgainesville.org
- (352) 377-3141



1. What is community's big idea in transportation planning?



2. What investments get us to that end?

- a. What is Bus Rapid Transit?
- b. What new or widened roads are planned?
- c. What about road repair?

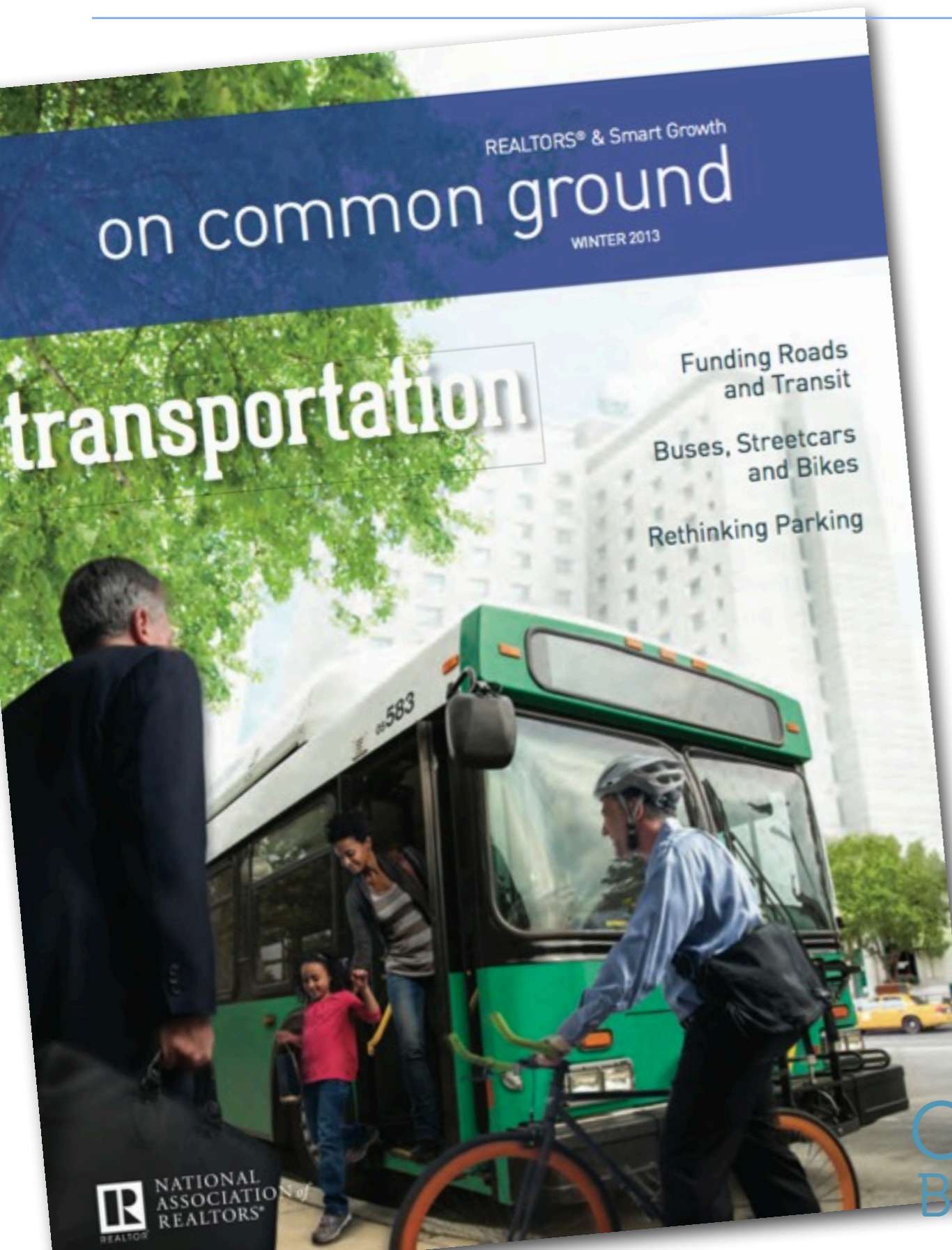


**OPEN FOR
BUSINESS**



**OPEN FOR
INNOVATION**

What is community's big idea in transportation planning?



“How we move around is undergoing a big shift. Travel by car has reached a saturation point... *And transit, whether bus, rail or streetcar, is proving itself to be a catalyst for successful real estate development, as demand for living and working near transit is increasing.*”

-National Association of Realtors

OPEN FOR
BUSINESS



OPEN FOR
INNOVATION

What is community's big idea in transportation planning?

The image shows a screenshot of a USA Today news article and a car search interface. The article, titled "Is USA's love affair with the automobile over?", discusses a decline in driving miles. The search interface on the right allows users to find new and used cars with filters for make, model, and location.

USA TODAY

NEWS SPORTS LIFE **MONEY** TECH TRAVEL OPINION

SEARCH

Is USA's love affair with the automobile over?

Joan Lowry, AP Business Writer 11:02 a.m. EDT August 29, 2013

Statistics show total miles Americans drive peaked in August 2007, is gradually falling.

SHARE **f** CONNECT **110** TWEET COMMENT EMAIL MORE

WASHINGTON (AP) — Driving in America has stalled, leading researchers to ask: Is the national love affair with the automobile over?

After rising for decades, total vehicle use in the U.S. — the collective miles people drive — peaked in August 2007. It then dropped sharply during the Great Recession and has largely plateaued since, even though the economy is recovering and the population growing. Just this week the Federal Highway Administration reported vehicle miles traveled during the first half of 2013 were down slightly, continuing the trend.

STORY HIGHLIGHTS

- "The car as a fetish of masculinity" is over for certain age groups, say travel behavior analyst
- Cars have morphed into computers on wheels, don't represent freedom on the

TELL US: How special is your car?

FIND NEW & USED CARS

New Used

Make Ex. Audi
All Makes

Model
All Models

Within 30 Miles of Your ZIP

OPEN FOR BUSINESS **OPEN FOR INNOVATION**

What is community's big idea in transportation planning?

“...suburbs need to reclaim their economic mojo. To do that, economic developers advise, they need to attract the young knowledge workers and the creative class, key to today's economy, as well as the updated housing, walkable neighborhoods, urban amenities and transportation options, which they are looking for.”

-National Association of Realtors

“The demand for walkable neighborhoods is strong among both young people and those of retirement age.”

-National Association of Realtors



What is community's big idea in transportation planning?

Today's successful cities all share an underlying quality: they understand that services must be provided for a traveling public that has changed dramatically since the early 1970's.

-Innovation Square Development Framework

Cities that invest heavily in building robust transportation systems offering a variety of travel options will be best equipped to serve their changing demographics and best positioned to attract new jobs and skilled workers.

-Innovation Square Development Framework

OPEN FOR
BUSINESS

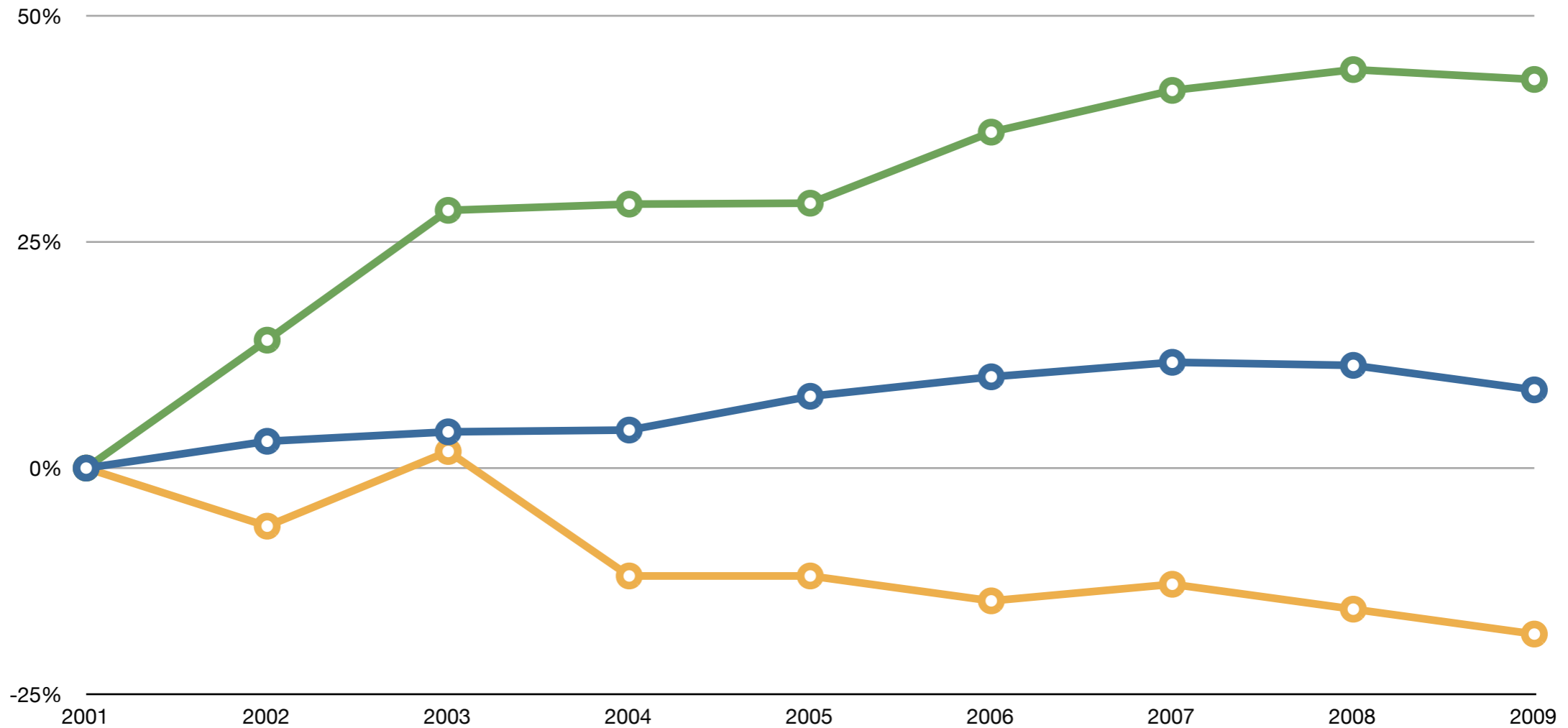


OPEN FOR
INNOVATION

Emphasizing Success of Multi-modal investments



2035 Long Range Transportation Plan Update
Year 2035 Cost Feasible Plan



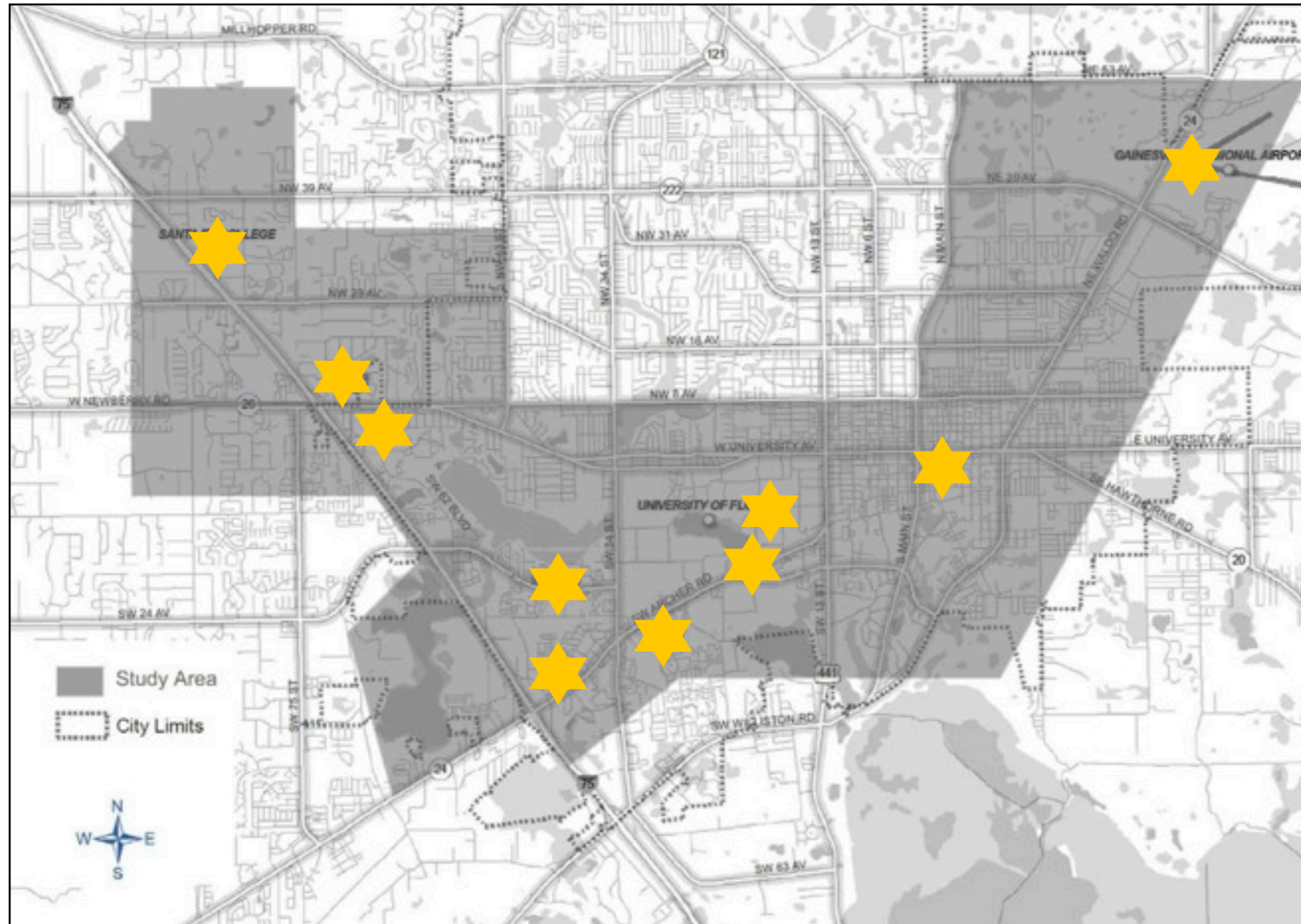
- UF enrollment
- RTS annual ridership
- Average number of cars at SW 34th Street and Hull Road each day

OPEN FOR BUSINESS



OPEN FOR INNOVATION

What is Bus Rapid Transit?



Connect:

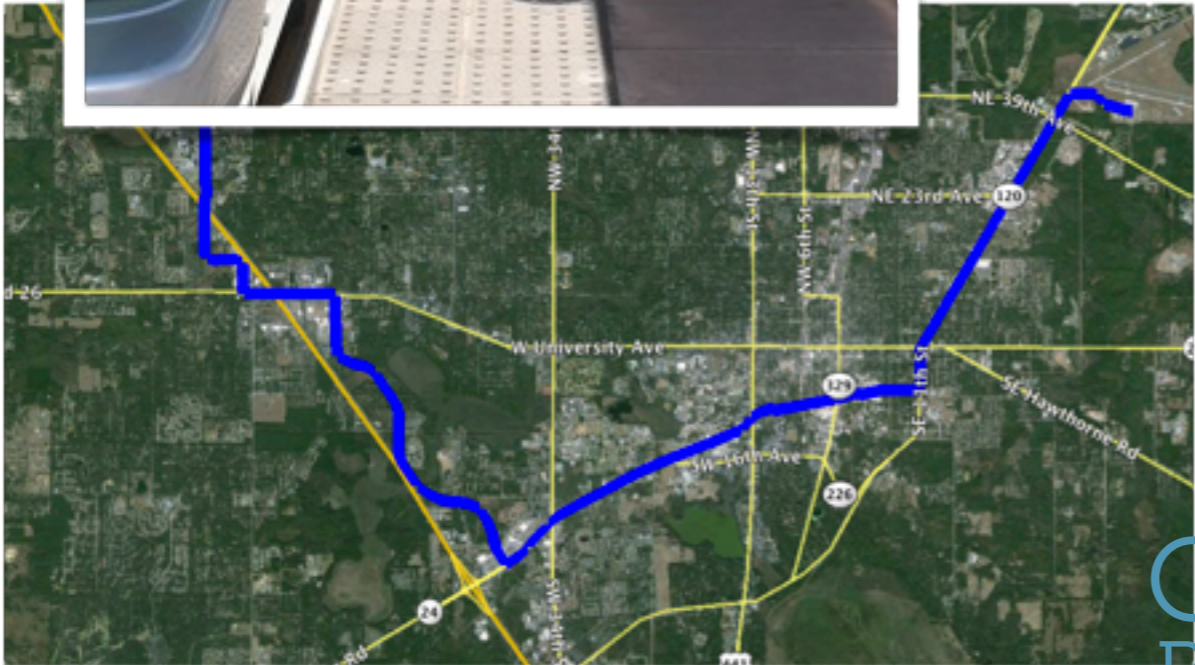
- Airport
- Highest density residential neighborhoods
- Downtown
- University of Florida
- Santa Fe College
- Commercial centers
- North Florida Regional Medical Center

OPEN FOR
BUSINESS



OPEN FOR
INNOVATION

What is Bus Rapid Transit?

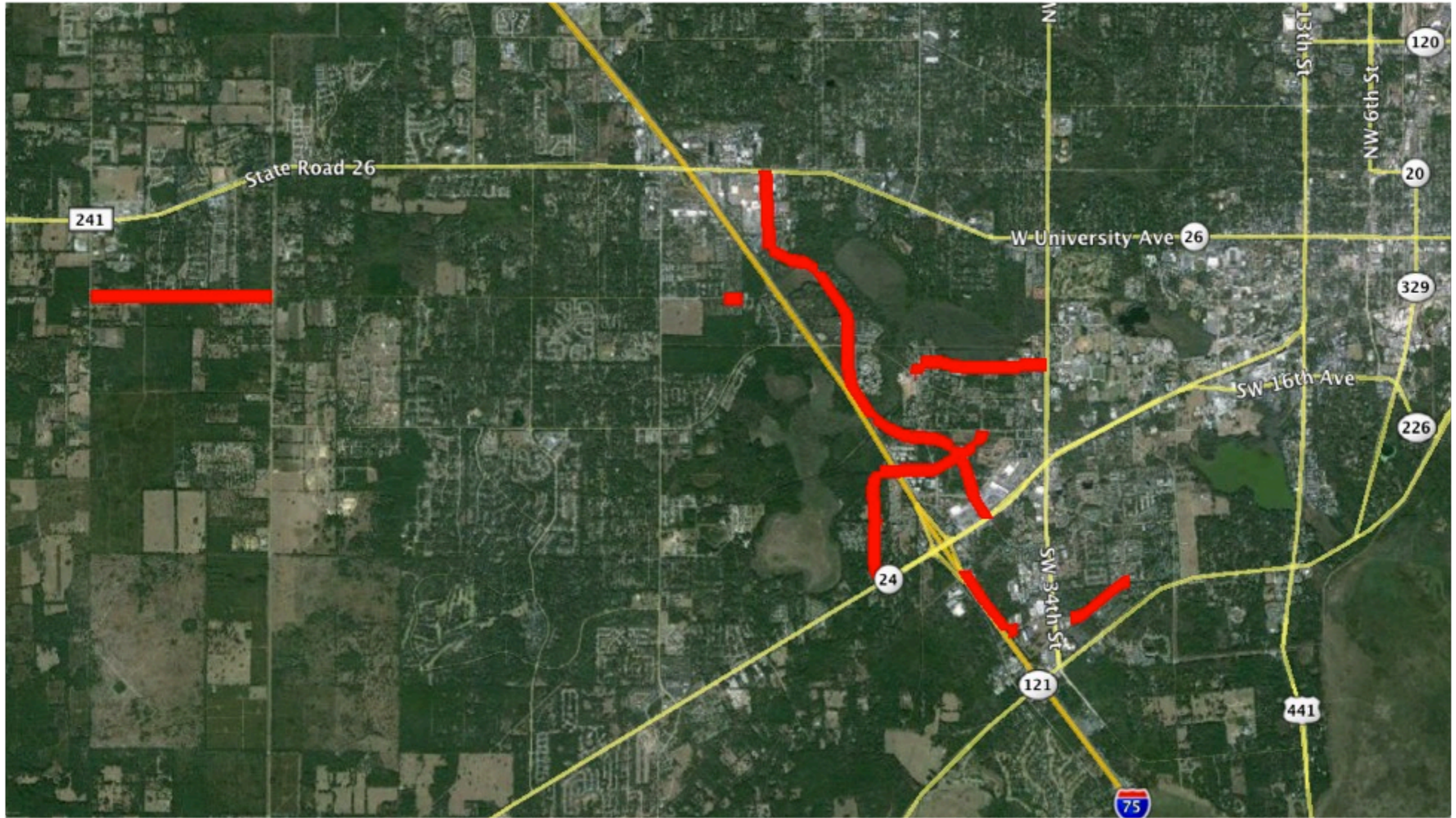


OPEN FOR BUSINESS



OPEN FOR INNOVATION

What new roads are planned?

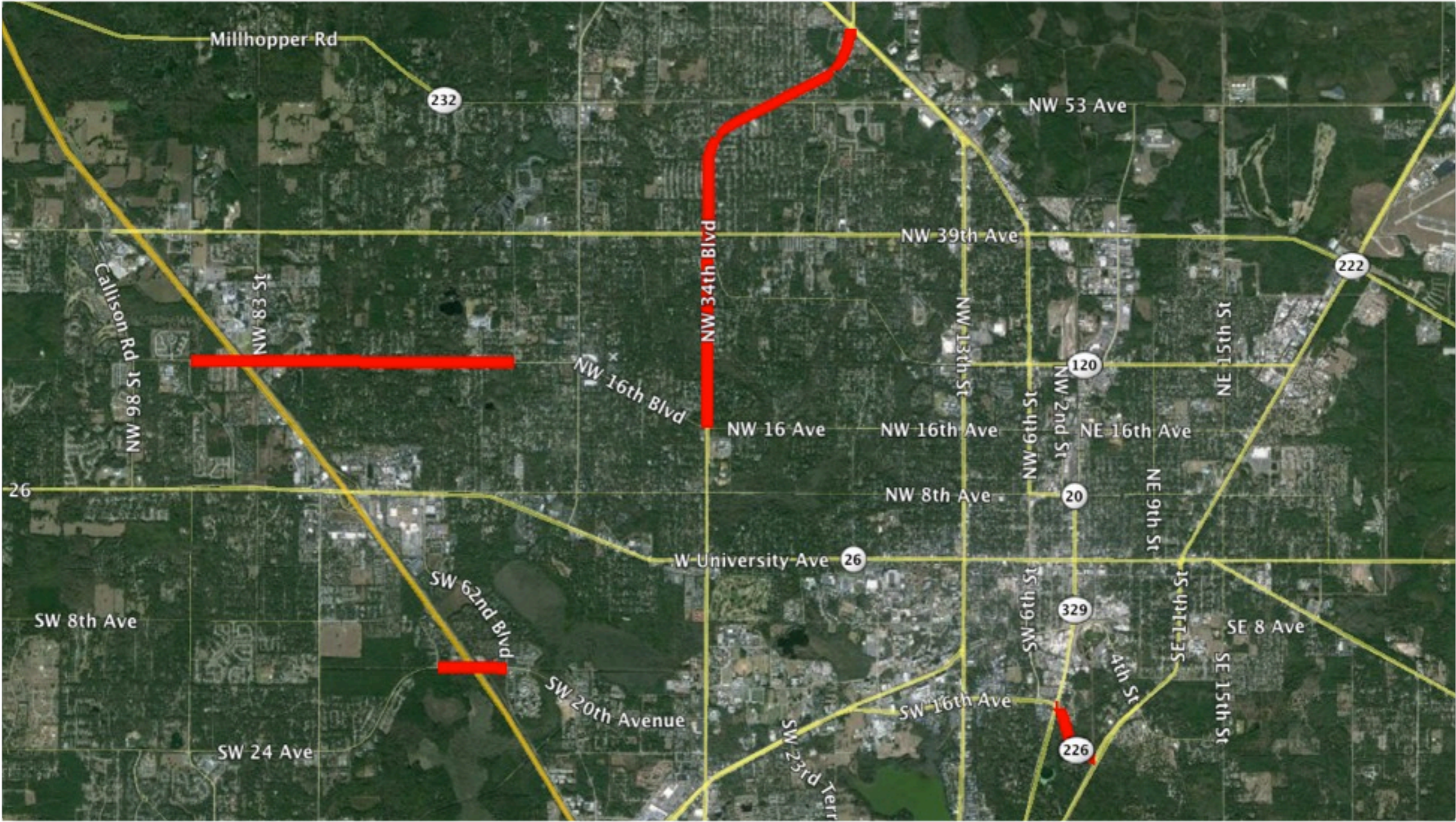


OPEN FOR
BUSINESS



OPEN FOR
INNOVATION

What widened roads are planned?



OPEN FOR
BUSINESS



OPEN FOR
INNOVATION

What about road repair?

Alachua County pavement management backlog

- Approximately \$380M pavement management need
- Real problem, colored by common misconceptions
- Less about transportation, more about capital asset maintenance
- Dollar figure is cumulative cost of decades of proposed expenditures
- Better conception is approximately “\$15M annually recurring need”





Questions?

OPEN FOR
BUSINESS



OPEN FOR
INNOVATION